

facts

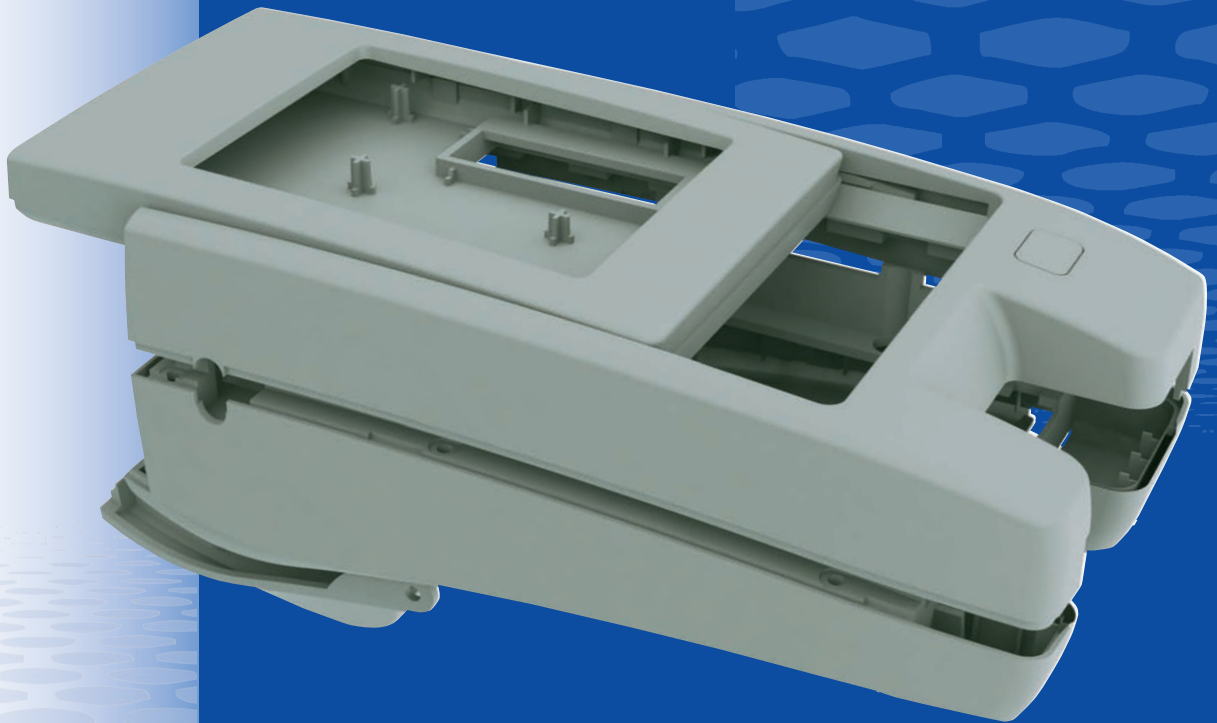
High flexibility and strength make this material the ideal choice for extremely robust prototypes. The material's properties that are similar to ABS/PP open up new possibilities in Stereolithography.



SL-TOOL® ABSlike

TECHNOLOGY UPDATE FOR YOUR PROTOTYPES

- > SL-TOOL® ABSlike stands out with its extraordinary tensile strength and high impact resistance.
- > Ideal for functional testing and also small series production from robust and durable applications.



- > Fills the gap between PA sintering and conventional stereolithography.
- > SL-TOOL® ABSlike: excellent for grinding, drilling, milling, turning, thread-cutting, varnishing
- > Material properties:
www.robotmech.com/Stereolithografie/ABSlike/en

A strong piece...